



**Greenville
County**

FLOODPLAIN MANAGEMENT

PAULA GLUCKER

ASSISTANT COUNTY ADMINISTRATOR
OR COMMUNITY PLANNING,
DEVELOPMENT, AND PUBLIC WORKS

– GREENVILLE COUNTY, SC

HAL CLARKSON, PE, CFM

PROJECT DIRECTOR

– WOOLPERT, INC.

*A LOCALLY FUNDED AND SUPPORTED
ROBUST PROGRAM WITH A VISION
"LET THE FLOODPLAINS FLOOD"*

AGENDA

- INTRODUCTIONS
- GOTHAM CITY
- DOCTOR DOOM
- SUPER HEROES
 - LEAGUE OF EXTRAORDINARY MEN (AND WOMEN)
 - WONDER WOMAN
 - SUPERMAN
 - AQUAMAN
- SUPER POWERS
- BATTLES WON
- THE MORAL OF THE STORY

INTRODUCTIONS

"YOU ARE GOING TO MAKE A
DIFFERENCE. A LOT OF
TIMES IT WON'T BE HUGE,
IT WON'T BE VISIBLE EVEN,
BUT IT WILL MATTER JUST
THE SAME."
- BATMAN



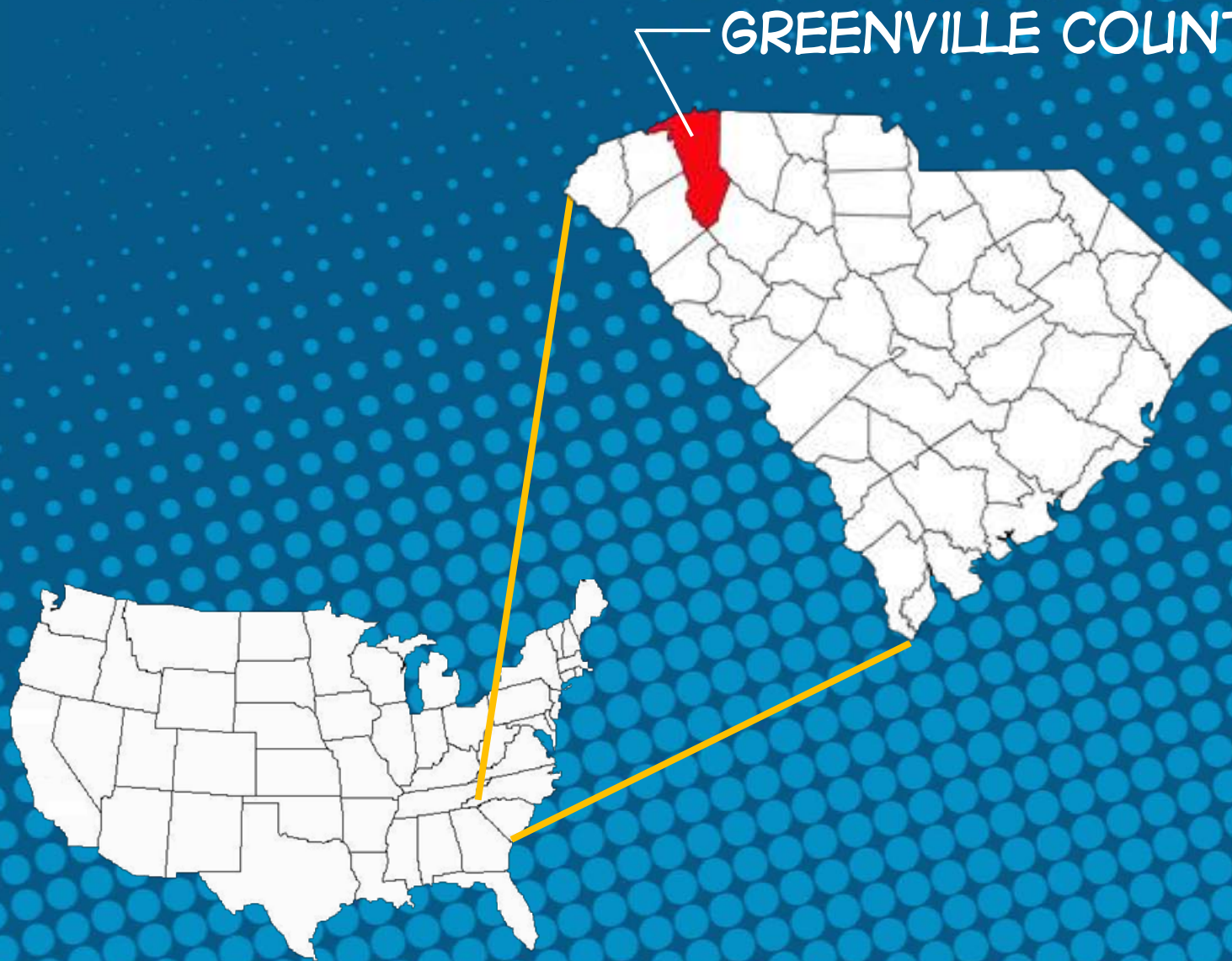
GOTHAM CITY (GREENVILLE COUNTY, SC)...



"SON, WE ARE THE GOTHAM CITY POLICE DEPARTMENT PUBLIC WORKS DEPARTMENT. WHAT DO WE DO WHEN WE COME FACE-TO-FACE WITH HELL ON EARTH? WE GET TO WORK."

– JAMES GORDON

LOCATION...

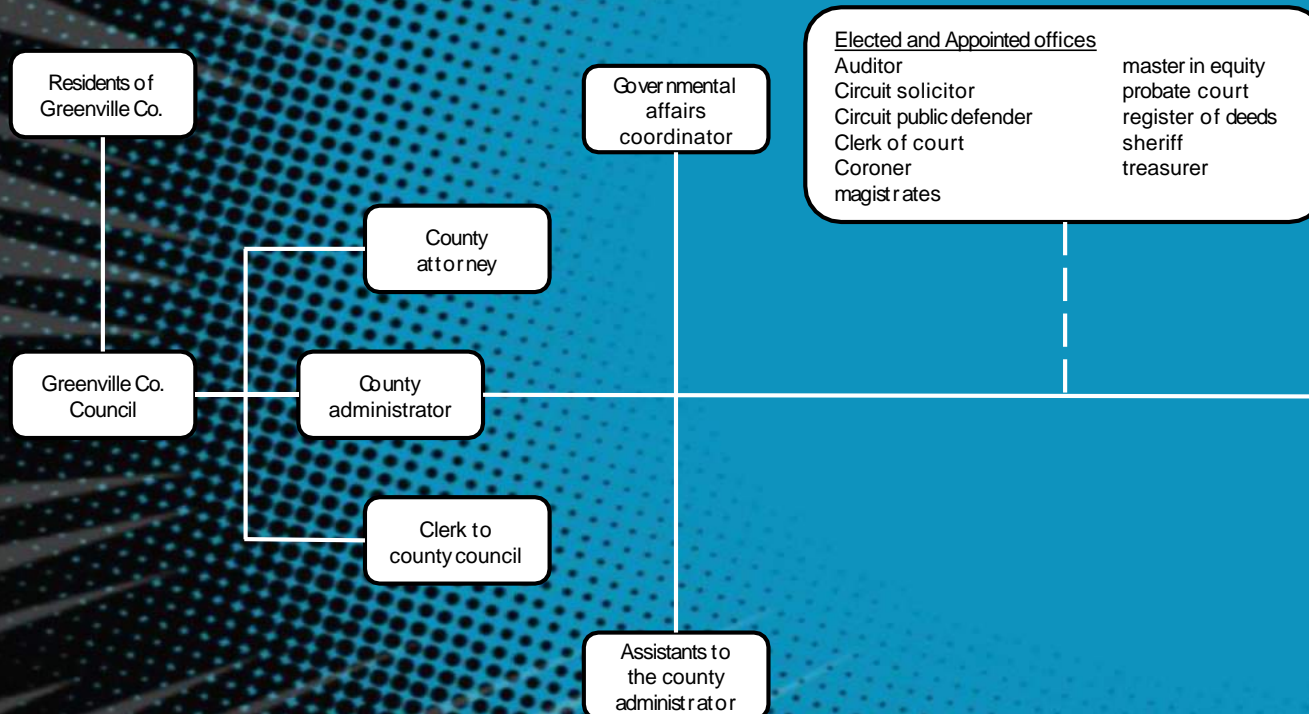


GREENVILLE COUNTY

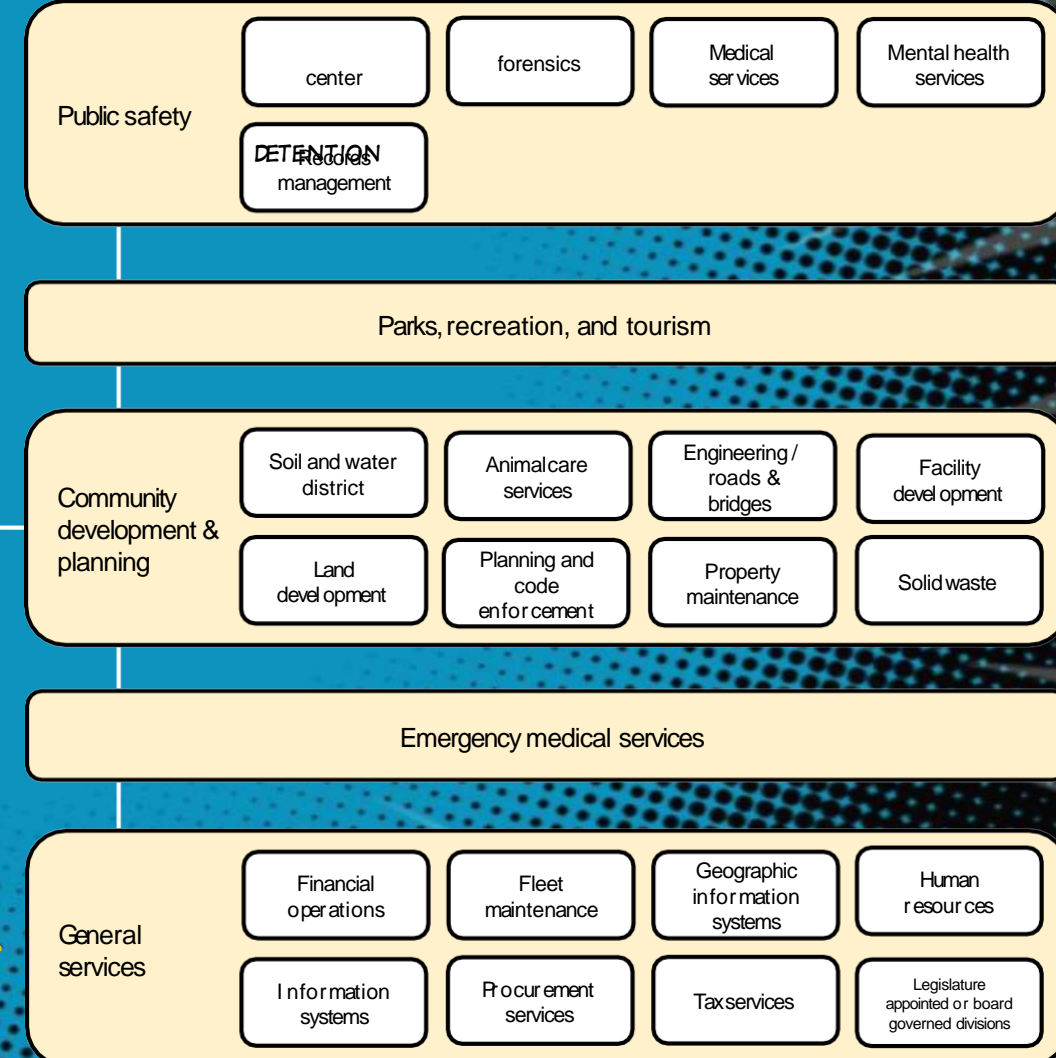
- LOCATED IN FOOTHILLS OF APPALACHIAN MOUNTAINS
- APPROXIMATELY 800 SQUARE MILES
- CURRENT POPULATION ≈ 393,000
- ANNUAL RAINFALL ≈ 50 INCHES

ORG CHART...

• WHERE DO FLOODPLAIN MANAGEMENT RESPONSIBILITIES RESIDE?



GREENVILLE COUNTY ORGANIZATIONAL CHART



DOCTOR DOOM (FLOOD EVENTS)

- HURRICANE JERRY (OCTOBER 1989)
- LATEST EVENT IN AUGUST 2014



"NO MATTER HOW BAD
THINGS GET, SOMETIMES
GOOD IS OUT THERE,
JUST OVER THE
HORIZON."

– GREEN LANTERN



LEAGUE OF EXTRAORDINARY MEN AND WOMEN



↑ COUNTY COUNCIL ↓

ROLE: PROTECT THE INTEREST OF THE EMPIRE



WONDER WOMAN (PAULA GLUCKER)

ROLE: AGENT OF SHIELD (COUNTY COUNCIL)

- VISIBLE AND ACCESSIBLE
- LOVE / HATE RELATIONSHIP WITH COUNCIL AND CITIZENS
 - TAKES THE "HEAT" FOR COUNCIL
 - TELLS CITIZENS WHAT THEY NEED TO KNOW, NOT WHAT THEY WANT TO HEAR
- FOCUSED ON "BIG PICTURE"
- QUICK RESPONSE (ROCKY CREEK)

"I NEED A DAY WHEN THERE AREN'T TWENTY CRISES TO DEAL WITH, BUT I DON'T SEE THAT COMING ANYTIME SOON."
- IRON MAN



SUPERMAN (FLOODPLAIN MANAGER)

- ROLE: FIGHTS FOR TRUTH,
JUSTICE, AND THE AMERICAN WAY
- ENFORCES ORDINANCE
- COORDINATES STUDIES AND
PLANNING



AQUAMAN (WOOLPERT)

ROLE: CONTROLS THE
WATER.... PROVIDE
TECHNICAL SUPPORT
STUDIES
BRIDGE / CULVERT
ANALYSIS
PLANNING
ASSISTANCE LOOKING
FOR LONG TERM,
SUSTAINABLE
SOLUTIONS



"OUR ANCESTORS
CALLED IT MAGIC, BUT
YOU CALL IT SCIENCE.
I COME FROM A LAND
WHERE THEY ARE ONE
AND THE SAME."

- THOR



CAPTAIN AMERICA (JSW & ASSOCIATES, INC.)

ROLE: ASSISTS WITH
PROPERTY BUYOUTS
RESCUES THOSE IN PERIL

FAIR BUYOUT PROCESS –
COUNTY TOTALLY
REMOVED FROM
NEGOTIATION PROCESS

"TRUST IS WHAT
MAKES AN ARMY,
NOT A BLUNCH OF
GUYS RUNNING
AROUND SHOOTING
GUNS.
– CAPTAIN AMERICA



PHILOSOPHY...


• LET THE FLOODPLAINS FLOOD TO:

- PROVIDE WILDLIFE AND PLANT HABITAT
- REPLENISH SOILS
- RECHARGE GROUNDWATER
- FILTER IMPURITIES
- PROTECT PEOPLE AND INFRASTRUCTURE

"YOU WILL GIVE THE PEOPLE AN IDEAL TO STRIVE TOWARDS. THEY WILL RACE BEHIND YOU. THEY WILL STUMBLE. THEY WILL FALL, BUT IN TIME THEY WILL JOIN YOU IN THE SUN. IN TIME, YOU WILL HELP THEM ACCOMPLISH WONDERS."

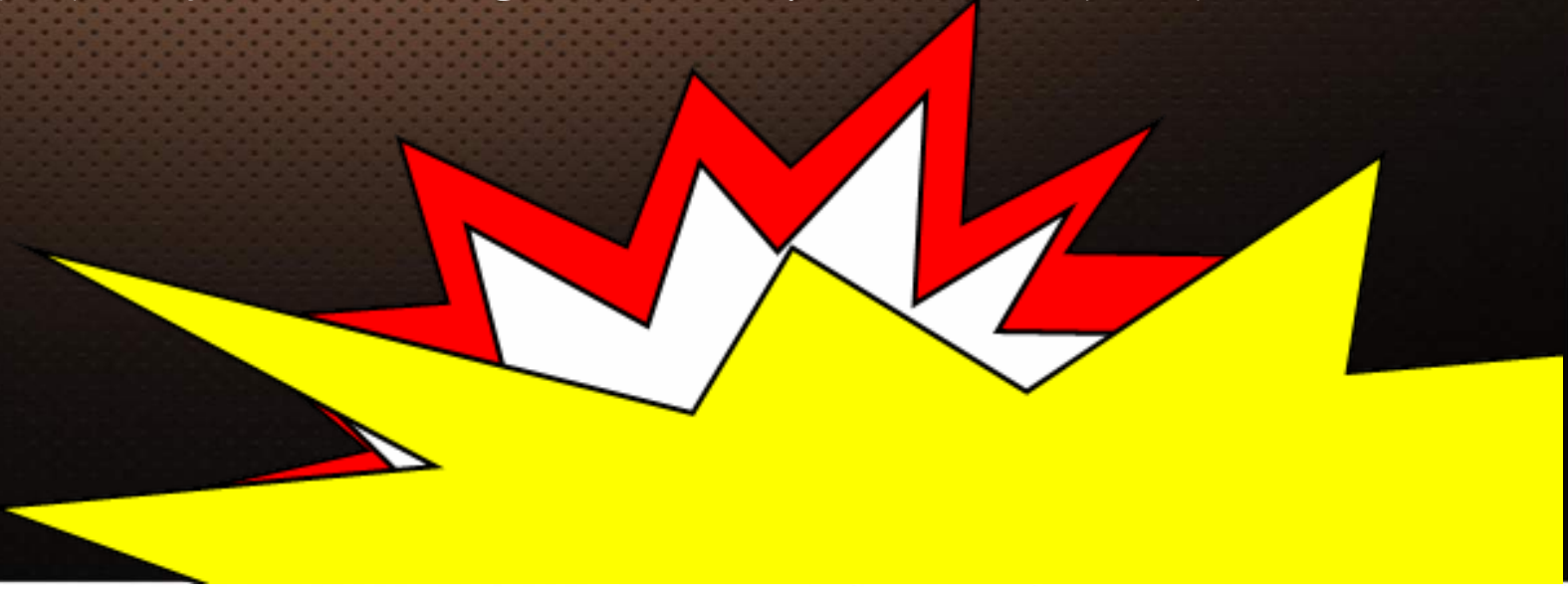
– JOR-EL, SUPERMAN'S FATHER



A detailed illustration of the superhero Martian Manhunter. He is shown from the waist up, facing slightly to the right. He has green, muscular skin, a bald head, and a serious expression. He is wearing a purple and red suit with a circular emblem on his chest. The background is a dark, textured brown.

"THE FUTURE IS WORTH
IT. ALL THE PAIN, ALL
THE TEARS. THE FUTURE
IS WORTH THE FIGHT."
- MARTIAN MANHUNTER

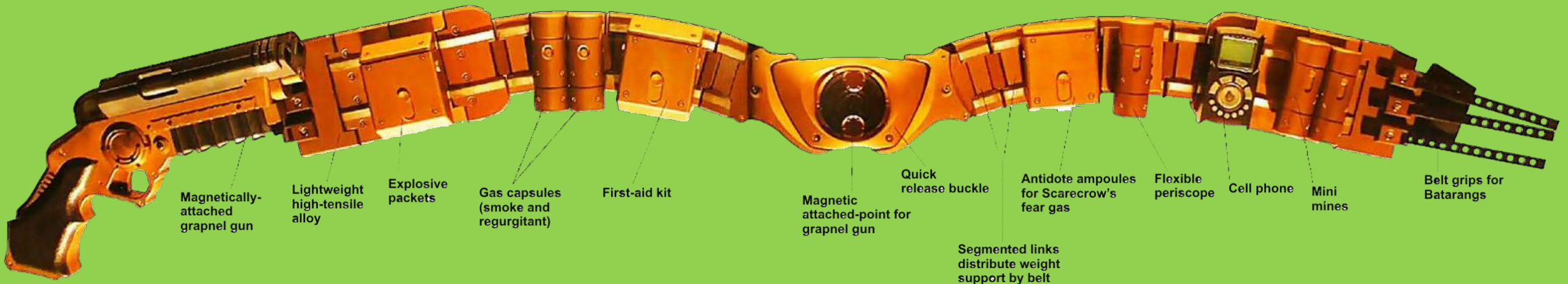
USING THE POWERS FOR GOOD...

1. REDUCING PERSONAL INJURY AND LOSS OF LIFE
 2. REDUCING DAMAGE TO PRIVATE PROPERTY AND PUBLIC INFRASTRUCTURE
 3. REDUCING COST OF EMERGENCY RESPONSE
 4. MAINTAINING, ENHANCING, AND RESTORING THE NATURAL FUNCTIONS OF THE FLOODPLAIN
- 
- A large, stylized graphic element in the bottom right corner. It consists of a bright yellow jagged shape, similar to a lightning bolt or a stylized 'M', with a red outline and white interior sections.

SUPERHERO UTILITY BELT...

- WATERSHED PRIORITIZATION AND SYSTEMATIC STUDY
 - RESPONDED/ADJUSTED TO FLOOD EVENTS (E.G., ROCKY CREEK WATERSHED)
- MEANINGFUL HAZARD MITIGATION PLAN
- PROGRESSIVE ORDINANCE AND ACTIVE ENFORCEMENT
- SYSTEMATIC IMPLEMENTATION OF SOLUTIONS
 - INFRASTRUCTURE UPGRADES
 - FOCUSED ON CHANNEL CAPACITY, ROAD CROSSINGS, PROPERTY PROTECTION
 - ELEVATION PROGRAM
 - \$7,500 PER ELEVATION PROJECT – COUNTY FUNDED
 - BUYOUTS
 - FEMA AND COUNTY FUNDED ELEMENTS
- PARTNERSHIPS

IT DOESN'T
MATTER WHO WE
ARE, WHAT
MATTERS IS OUR
PLAN." – BANE



THE BATTLES...

- WATERSHED STUDIES: ROCKY CREEK, BRUSHY CREEK, GILDER CREEK, UPPER REEDY, GROVE CREEK
- HAZARD MITIGATION PLANNING
- MAPPING

"...AND KNOWING
IS HALF THE
BATTLE."

- G.I. JOE



WHY THIS MAKES SENSE...

- THE BENEFITS
 - BRINGING COMMUNITIES TOGETHER
 - BENEFITING THE COUNTY'S TRAIL SYSTEM

"SOMETIMES THE TRUTH ISN'T ENOUGH, SOMETIMES PEOPLE DESERVE MORE. SOMETIMES PEOPLE DESERVE TO HAVE THEIR FAITH REWARDED."

- BATMAN



EVIL DEFEATED...

- 158 HOMES BOUGHT
- 43 RLS
MITIGATED / 22
REMOVED,
- 6 HOMES ELEVATED
- OVER 64
CULVERTS/BRIDGES
UPGRADED
- 52 ACRES RETURNED
TO THE FLOODPLAIN



"NO MATTER HOW MANY TIMES YOU SAVE THE WORLD, IT ALWAYS MANAGES TO GET BACK IN JEOPARDY AGAIN."

"SOMETIMES I JUST WANT IT TO STAY SAVED! YOU KNOW?! FOR A LITTLE BIT. I FEEL LIKE THE MAID: "I JUST CLEANED UP THIS MESS! CAN WE KEEP IT CLEAN FOR, FOR 10 MINUTES?! PLEASE?!"

- MR. INCREDIBLE

NEIGHBORHOODS/WATERSHEDS OF IMPLEMENTATION

- BRUSHY CREEK

- LAKE FAIRFIELD
- BOTANY WOODS
- WELLINGTON GREEN KINGS GATE
- NORTHSIDE HEIGHTS
- CHESTNUT HILLS
- BROOKWOOD
- HERITAGE HILLS
- DEL NORTE

- ROCKY CREEK

- MOUNTAIN BROOK
- MERRIFIELD

- REEDY RIVER

- BUNCOMBE PARK SUBDIVISION
- BEREA FOREST SUBDIVISION
- UPPER REEDY WATERSHED
- MOUNTAIN VIEW ACRES
- WESTERN HILLS
- SHARON PARK

- GILDER CREEK

- CHANDLER RIDGE
- LEE VAUGHAN

LAKE FAIRFIELD-BRUSHY CREEK

- 15 PROPERTY ACQUISITIONS (1 REPETITIVE LOSS (RL))
- VEHICULAR BRIDGE AND ROADWAY REMOVED
- NEW CUL-DE-SACS
- ELEVATED PEDESTRIAN BRIDGE TO MAINTAIN CONNECTIVITY
- RESTORATION OF THE FLOODPLAIN
- COMMUNITY PARTNERSHIP WITH LAKE FOREST GARDEN CLUB
TO PLANT AND MAINTAIN TOGETHER

BOTANY WOODS-BRUSHY CREEK

- 4 PROPERTY
AQUISITIONS
- PROPERTY
STABILIZED

LONGFOREST ACRES-BRUSHY CREEK

- 12 PROPERTY ACQUISITIONS, 3 (RL)
- PROPERTY STABILIZED WITH GRASS FOR PARKING LOT FOR RECREATION
- ADJACENT TO THE SWAMP RABBIT TRAIL

WELLINGTON GREEN / KINGSGATE BRUSHY CREEK AND ACCOMPLISHMENTS

- 25 PROPERTY ACQUISITIONS
(6 RL)
- ACQUIRED A NATIONAL PARK
SERVICE GRANT TO DESIGN
COMMUNITY GARDEN, PARK
AND TRAILS
- FLOODPLAIN RESTORATION
PROGRAM – WILDFLOWER
AND TREE PLANTING AS
WELL AS STREAM BANK
RESTORATION
- GREENGATE NEIGHBORHOOD
LEASES AND
MAINTAINS THE AREA

REEDY RIVER

- BLINCOMBE PARK SUBDIVISION – 13 PROPERTY ACQUISITIONS
- BEREA FOREST SUBDIVISION – 2 PROPERTY ACQUISITIONS (1 RL)
- UPPER REEDY WATERSHED – 10 PROPERTY ACQUISITIONS
- MOUNTAIN VIEW ACRES – 1 HOUSE, 19 MOBILE HOMES
- WESTERN HILLS – 2 PROPERTY ACQUISITIONS
- SHARON PARK – 3 PROPERTY ACQUISITIONS (1 RL)

GILDER CREEK

- CHANDLER RIDGE – 1 PROPERTY ACQUISITION

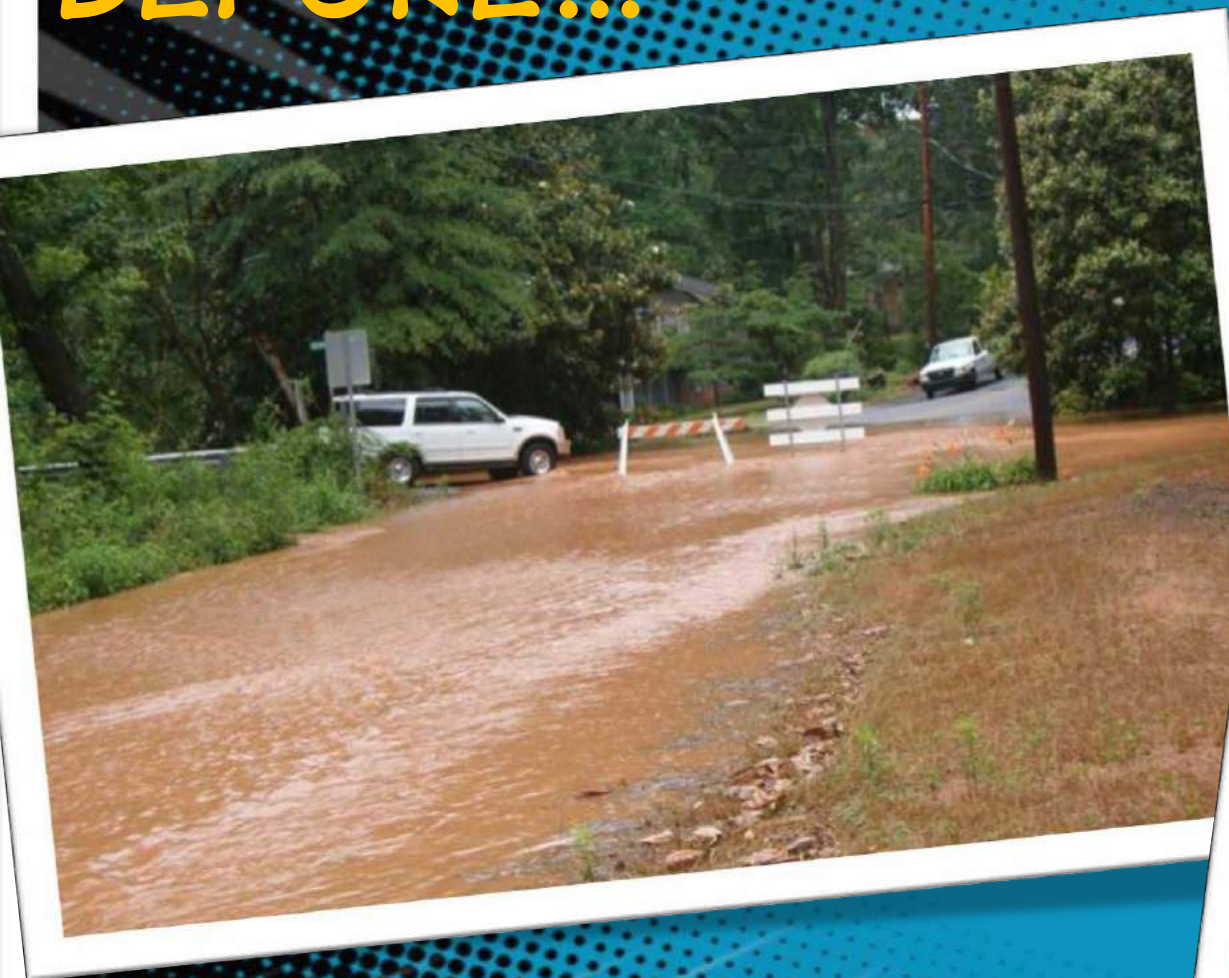
BRUSHY CREEK

- NORTHSIDE HEIGHTS – 6 PROPERTY ACQUISITIONS
- CHESTNUT HILLS – 1 PROPERTY ACQUISITION (1 RL)
- BROOKWOOD – 1 PROPERTY ACQUISITION
- HERITAGE HILLS – 5 PROPERTY ACQUISITIONS
- DEL NORTE – 56 PROPERTY ACQUISITIONS (11 RL)

ROCKY CREEK

- MOUNTAIN BROOK – CULVERT REPLACED, 1 HOME PURCHASED
- MERRIFIELD – UNDERGOING DRAINAGE DESIGN PROJECT
- ADDITIONAL 5 HOMES PURCHASED IN WATERSHED

BEFORE...



...AFTER





BEFORE...



...AFTER

THE MORAL OF THE STORY

- "WITH GREAT POWER COMES GREAT RESPONSIBILITY" – **UNCLE BEN, SPIDERMAN'S UNCLE**
- "YOU ARE STRONGER THAN YOU THINK YOU ARE. TRUST ME." – **SUPERMAN**
- "CATS COME WHEN THEY FEEL LIKE IT. NOT WHEN THEY ARE TOLD." – **CAT WOMAN**
- "THE REAL CRIME WOULD BE NOT TO FINISH WHAT WE STARTED." – **DOCTOR OCTOPUS**
- "EVERYDAY I WAKE UP KNOWING THAT NO MATTER HOW MANY LIVES I PROTECT, NO MATTER HOW MANY PEOPLE CALL ME A HERO, SOMEONE EVEN MORE POWERFUL COULD CHANGE EVERYTHING". – **SPIDERMAN**
- "THE TRAINING IS NOTHING. THE WILL IS EVERYTHING." – **BATMAN'S MENTOR**
- JUST BECAUSE SOMEONE STUMBLES AND LOSES THEIR PATH DOESN'T MEAN THEY CAN'T BE SAVED." – **PROFESSOR CHARLES XAVIER**

"WAS THAT OVER
THE TOP, I CAN
NEVER TELL."
- THE RIDDLER



QUESTIONS...

